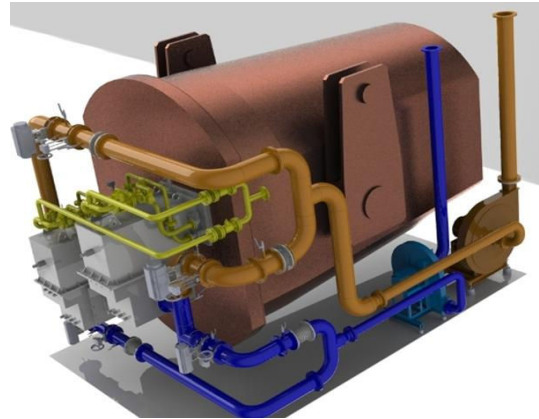
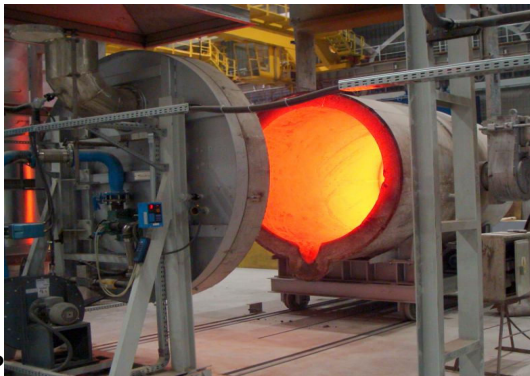


## PI-2 LADLE DRYING AND PREHEATING STATION

### Ladle Heating and Drying

Ladle heating is applied to preheat the ladle prior to filling with molten metal. Ladle drying is carried out after each repair of the ladle's refractory lining.

Depending on specific requirements, the process can be controlled with respect to: heating rate, achieved temperature, holding times at designated temperature levels.



- maximum heating temperature: 1250 °C
- temperature curve: programmable
- heating rate: from 10 K/h to 300 K/h, with the possibility of maintaining the required temperature for any duration
- full automation
- process visualization
- data archiving

### Customer Benefits

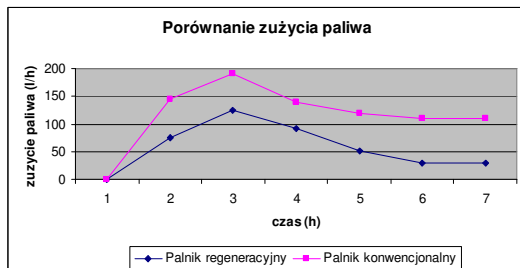
- reduced fuel consumption
- high reliability
- optimization of the technological process

### Applications

- steelmaking
- non-ferrous metallurgy
- foundry industry

### Description of Technical Solutions

- method of installation:
  - stationary
  - mobile
- method of heating:
  - high-efficiency gas burners
  - regenerative burners



- ladle capacity: to be agreed
- ladle position:
  - horizontal
  - vertical

