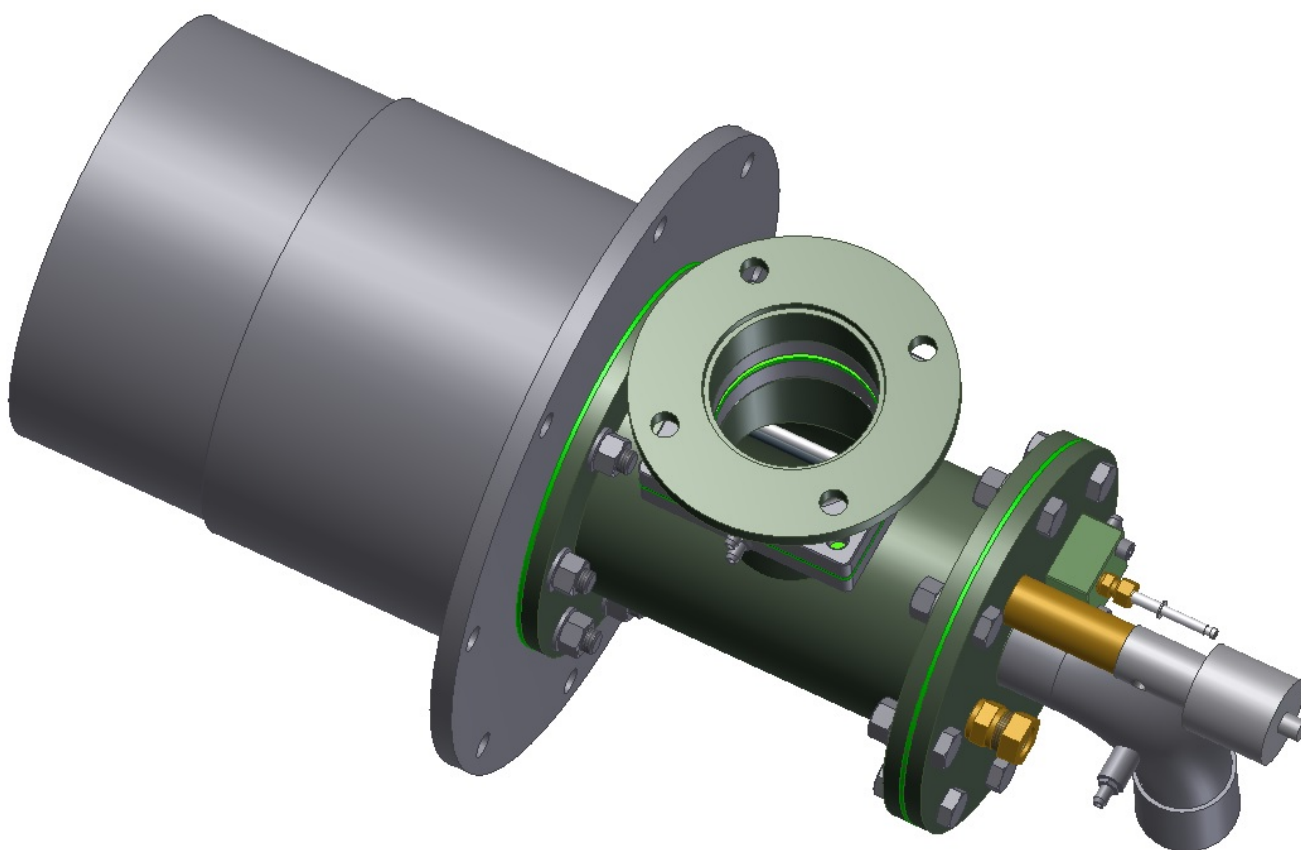


HIGH-VELOCITY BURNER SPG-450



DATA SHEET

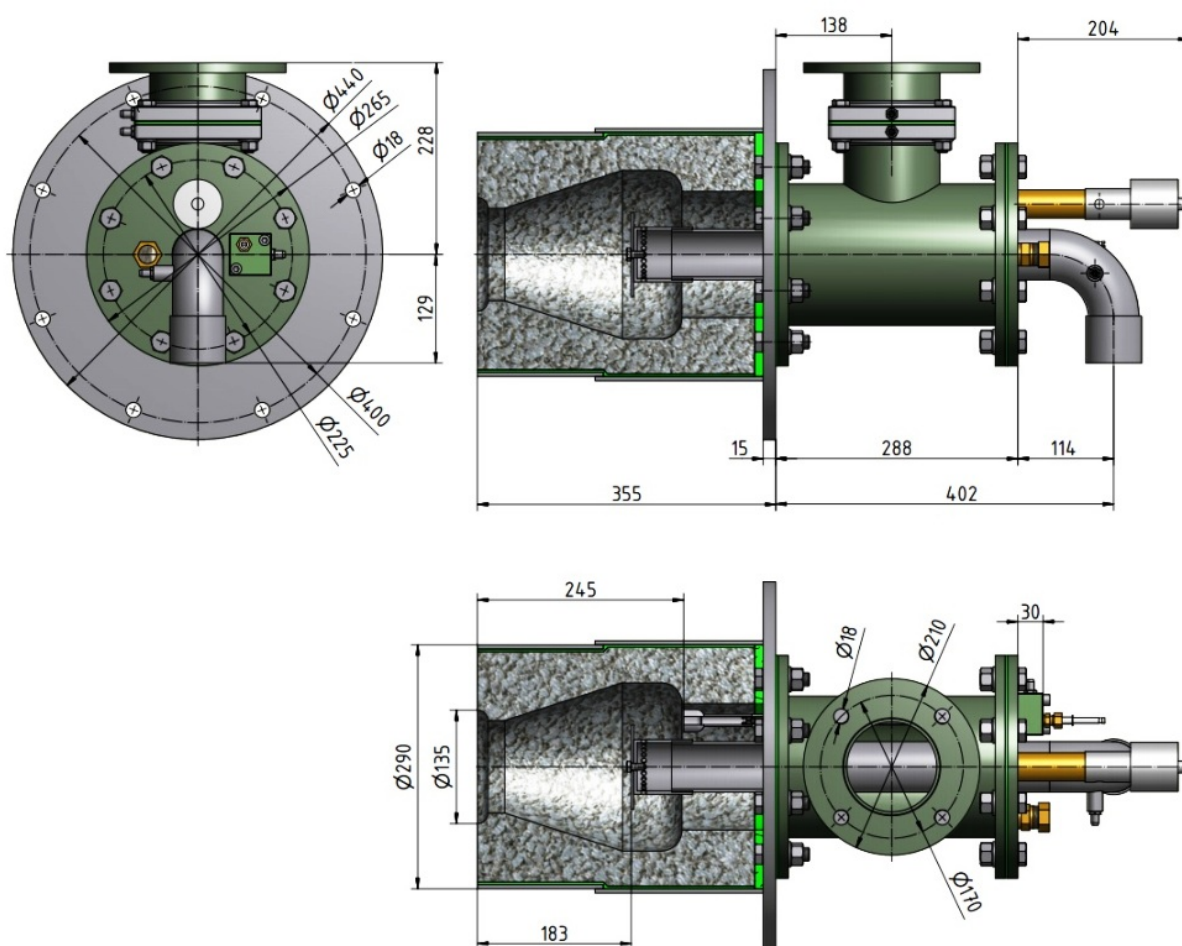
This documentation contains information proprietary to Przedsiębiorstwo Techniki Ciepłej PIECOSERWIS Sp. z o.o. It should be used responsibly and solely for the purposes for which it has been prepared. The documentation is of an informational nature regarding the company's potential and capabilities. It may not be reproduced or used in any way, in whole or in part, without the authorization of PTC PIECOSERWIS Sp. z o.o.

Description and Technical Characteristics of the SPG Burner

The SPG burner is designed for direct gas combustion in various types of furnaces and heating devices. The nominal thermal power of the burner, for a given gas pressure, is determined by the hydraulic resistance of the gas nozzle and the flame outlet block.

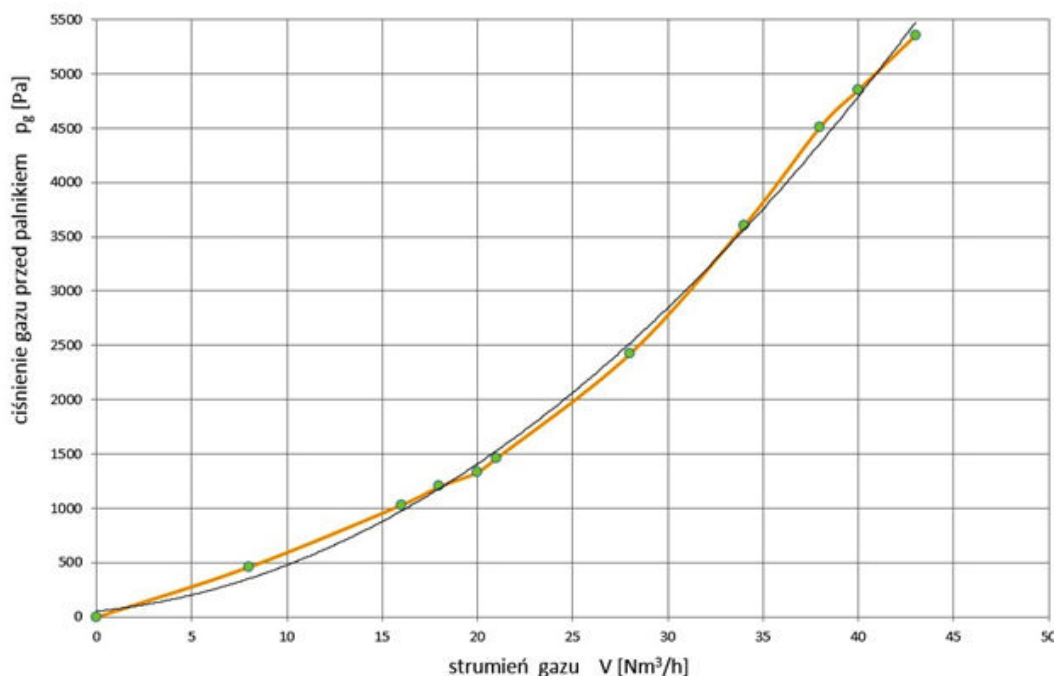
The axial flame velocity in the outlet opening of the SPG burner block is approximately 75 m/s, which ensures improved heat transfer and a more uniform temperature distribution in the heating chamber compared to burners with low axial flame velocity.

The design features and dimensions of the SPG-450 burner are shown in the drawing below.



SPG-450 BURNER**Data Sheet****SPG – 450 Technical Data**

Type of burner by gas combustion method:	diffusion
Nominal thermal power:	450 kW
Power adjustment range:	1÷10
Type of control:	continuous or “high”, “low”
Gas type:	natural gas E group, coke- oven gas
Gas inlet pressure:	2,5 ÷ 10 kPa
Combustion air inlet pressure:	60 mbar
Ignition:	ignition burner with spark ignition
Flame monitoring:	UV detector

Flow characteristics of the RPG - 450

Materials of Burner Components

- ✓ Body: structural steel – surface protected against corrosion
- ✓ Gas nozzle: heat-resistant steel
- ✓ Housing of ceramic burner block: heat-resistant steel
- ✓ Burner plate: structural steel
- ✓ Flame block: ceramic/steel

Applications

- ✓ Heat treatment furnaces with fibrous lining or ceramic refractory – periodic or continuous operation
- ✓ Heating furnaces with fibrous lining or ceramic refractory – periodic or continuous operation
- ✓ Periodic furnaces for firing ceramic products
- ✓ Industrial heating devices

Note

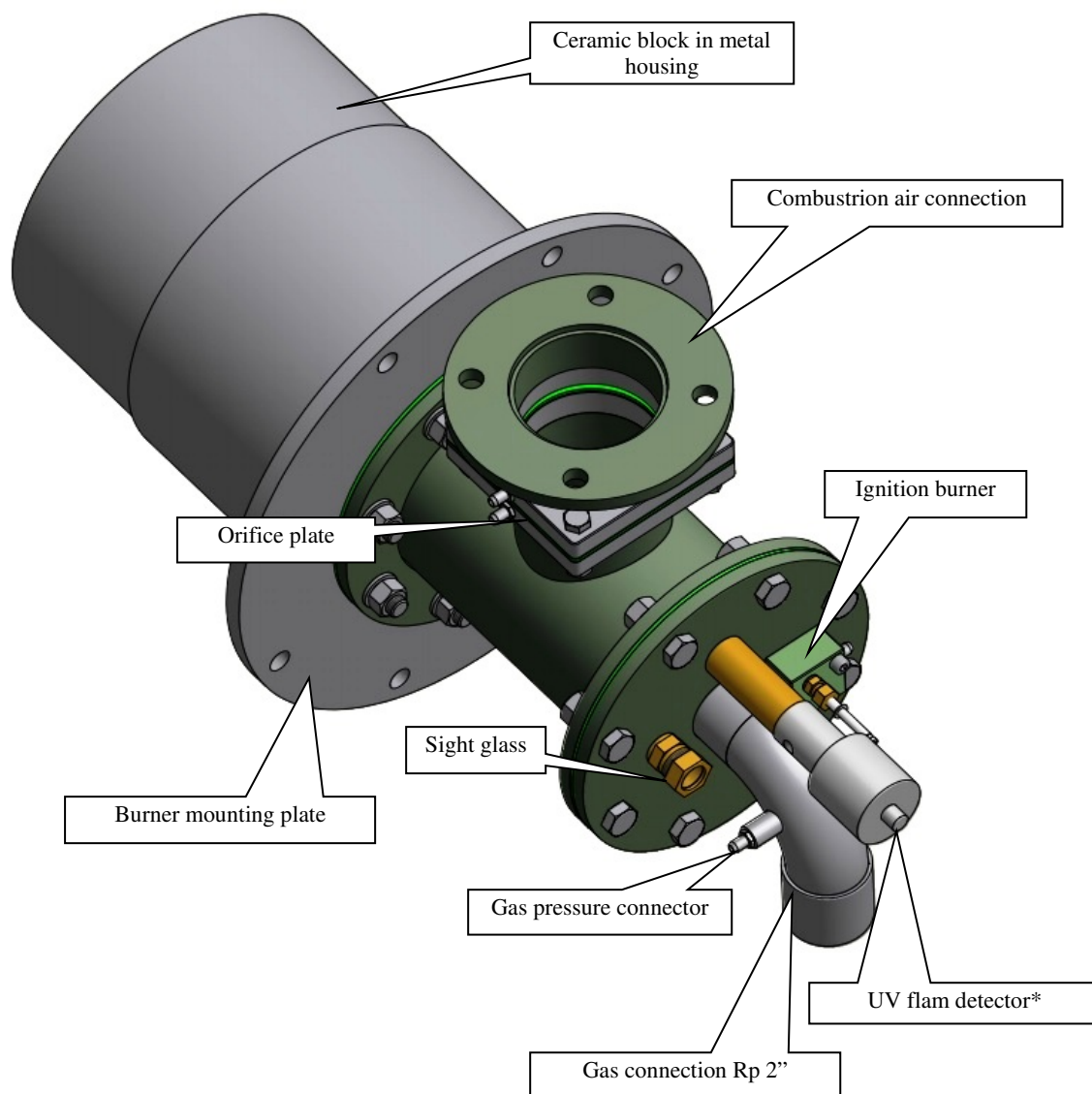
The SPG burner does not require ongoing adjustment during normal operation. Its operating parameters are set or modified during the start-up of the equipment in which it is installed, or during servicing.

SPG – 450 Burner Equipment

The SPG burner includes the necessary fittings and accessories enabling safe and automatic ignition, supervision of proper operation, monitoring, and adjustment of operating parameters. The equipment forming part of the SPG burner is shown in the drawing below.

SPG-450 BURNER

Data Sheet



* In burners operating in continuous-operation furnaces at temperatures below 750°C, the UV flame detector is equipped with a shutter used to verify the correctness of its operation..